

NOx Mashups

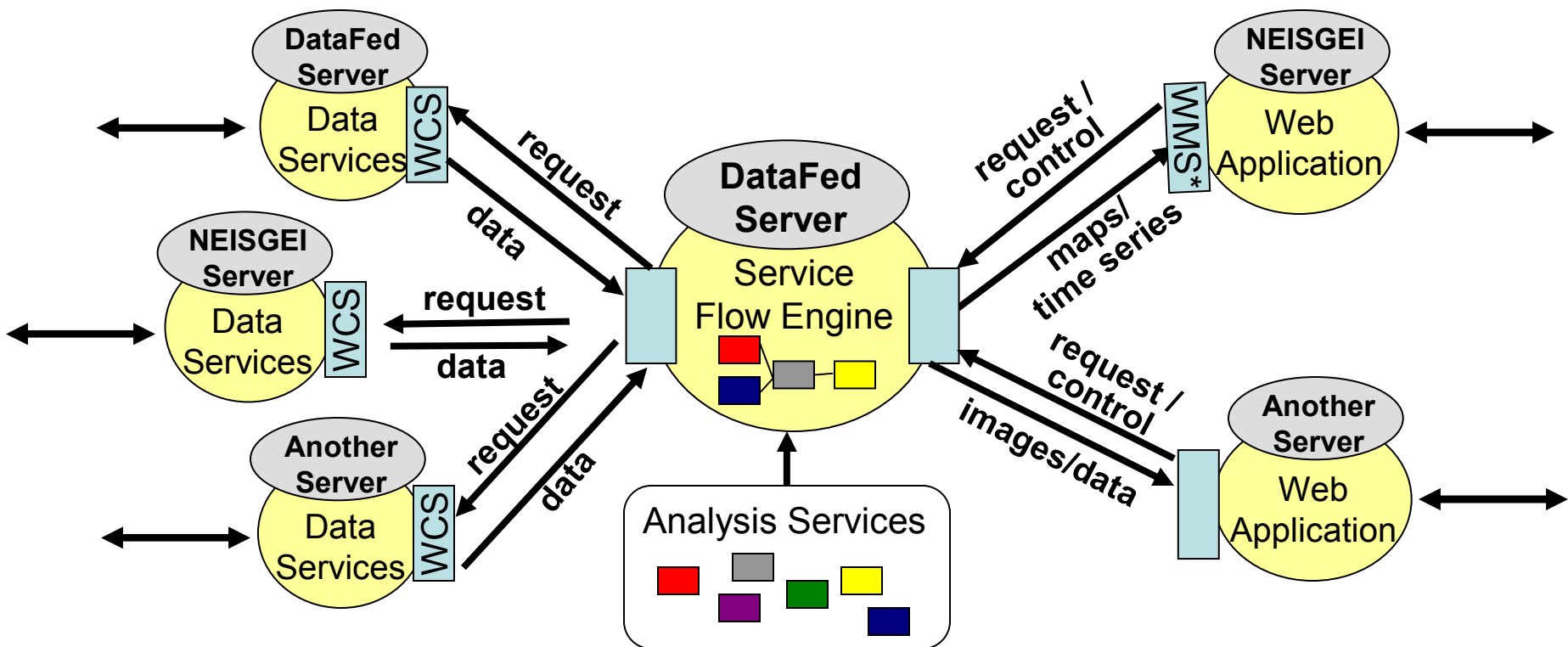
Stefan Falke

Washington University &
Northrop Grumman IT

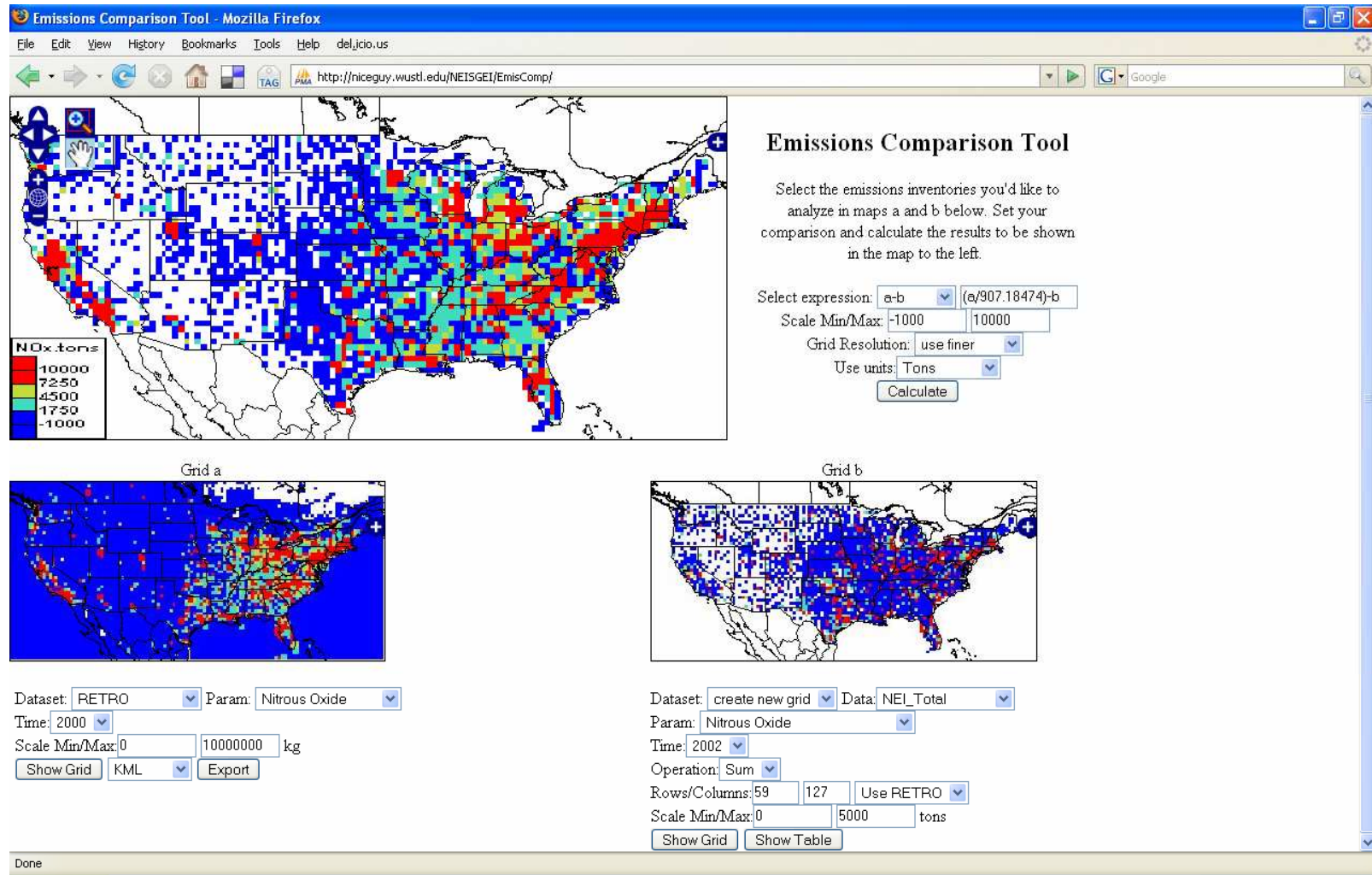
Web Application Framework

Web services are modular components that gain value when connected to form a **chain of services**, thereby creating a web application.

The services can be **geographically distributed** among servers. The services come together by way of a **workflow**, which constructs and manages a set of services chained together.



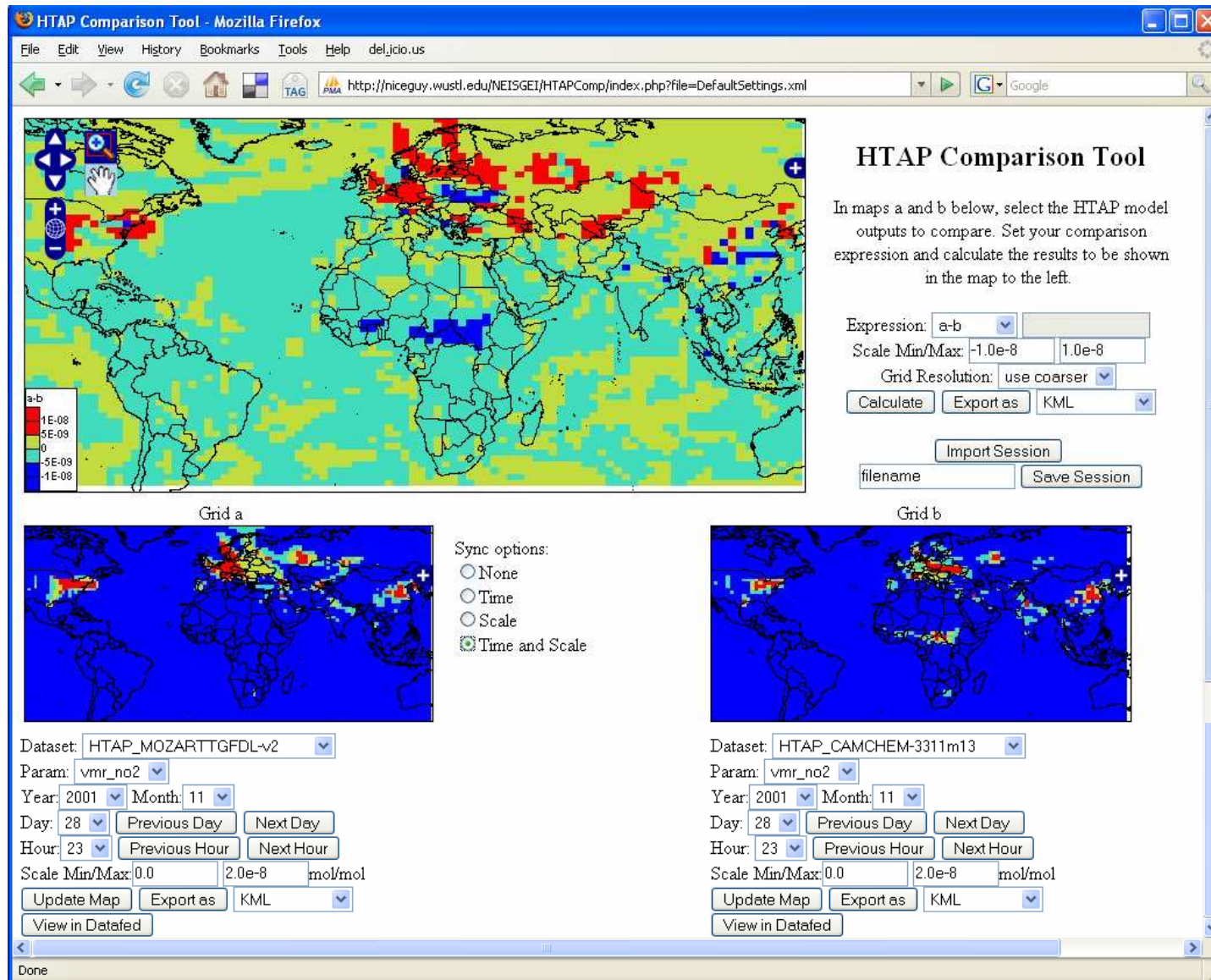
Comparing Point and Grid Emissions Datasets



- Spatially interpolate point emission to gridded emissions.
- Compare newly calculated gridded emissions with other gridded emissions

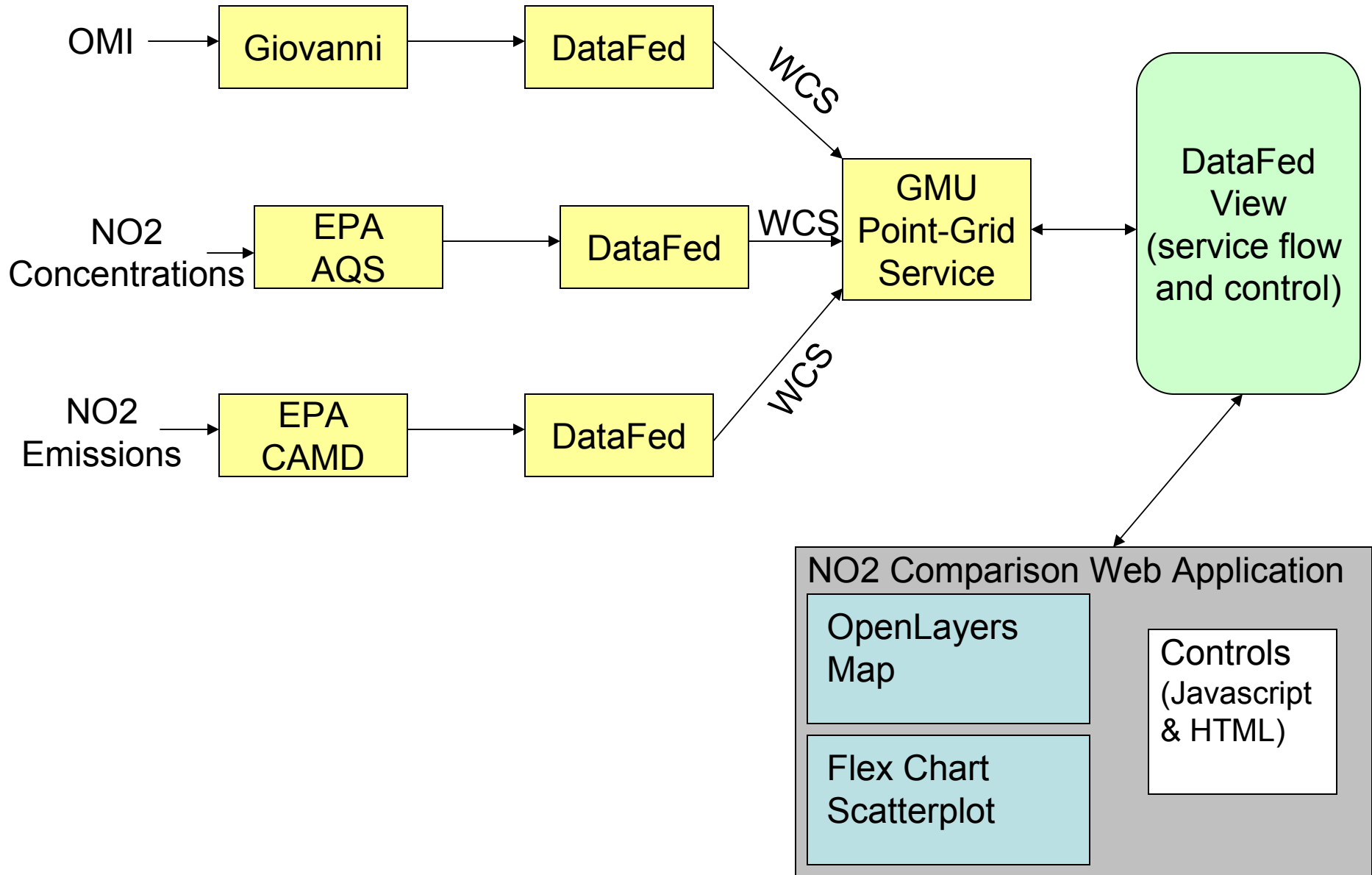
<http://niceguy.wustl.edu/NEISGEI/EmisComp/>

Web Application (“Mashup”)

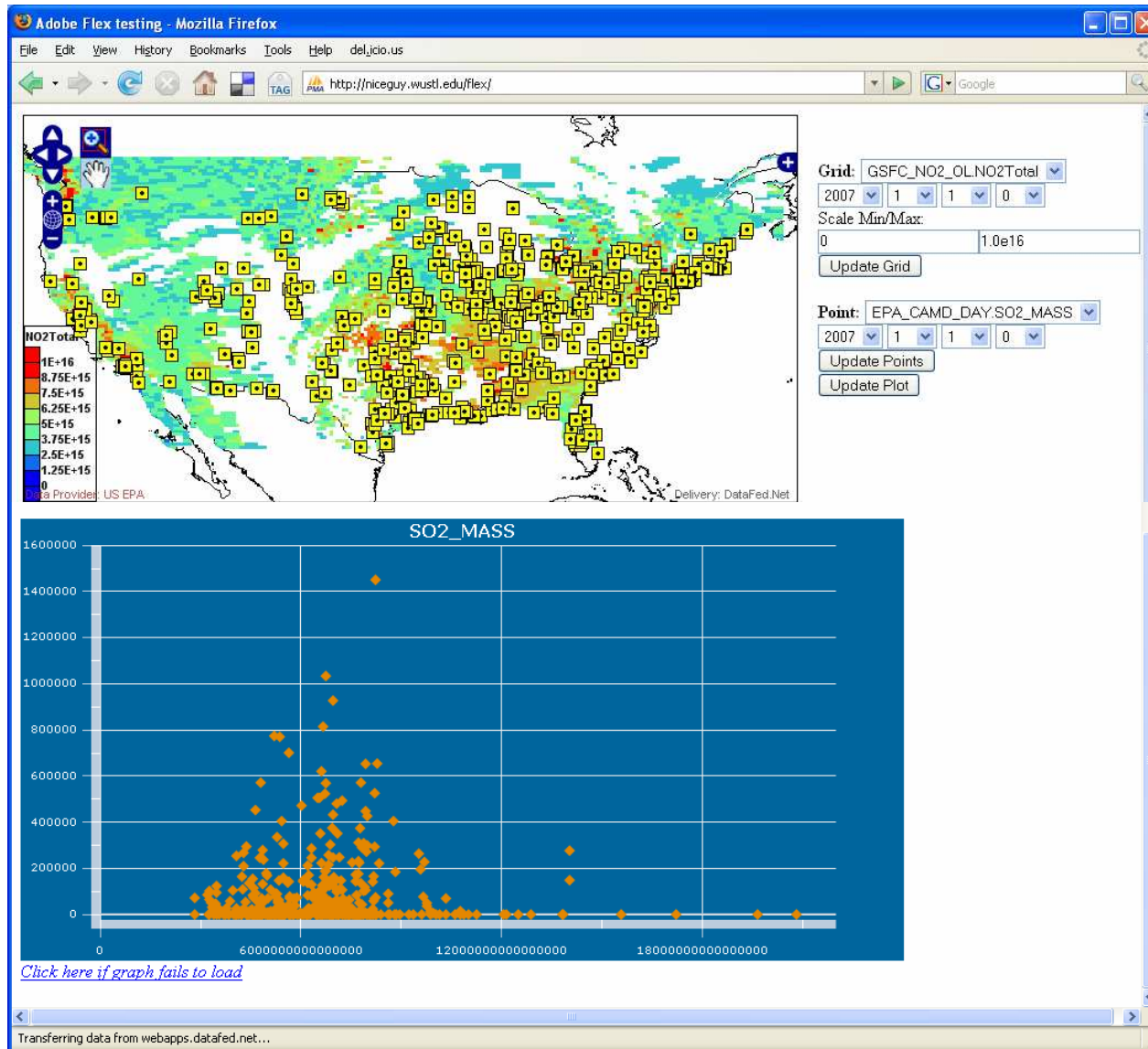


<http://niceguy.wustl.edu/NEISGEI/HTAPComp/>

Point-Grid Comparison Information Flow



Point-Grid Comparison



<http://niceguy.wustl.edu/flex>